

Summary & Highlights

In week 1 of 2010, local influenza activity indicators showed a mixture of decreases and increases compared to last week, with ILI Outpatient Sentinel Sites, ED visits, and labs at or below seasonal historical baseline levels.

- Local Geographic Activity Designation (Click [here](#) for definitions) = SPORADIC
- Hospital labs reported 348 tests run with 4 positive results (1.15%) for week 1, this percentage positive is 17% lower than the previous week. This percentage is lower than the historical baseline average.
- Hospital emergency department (ED) and pediatric urgent care (PUC) ILI indicators and respiratory related visits decreased compared to the previous week, with figures for ED visits similar to the historical baseline average for this time of year.
- Sales of over-the-counter medications were mostly higher compared to last week (cough and cold, electrolytes, adult anti-fever, chest-rubs, throat lozenges) with the exception of slight decreases in thermometer and pediatric anti-fever sales. A slight decrease in antiviral prescriptions was reported in week 52 (most recent week available).
- Nationally, during week 52, influenza B viruses co-circulated at low levels with 2009 influenza A (H1N1) viruses. All sub-typed influenza A viruses reported to CDC this week were 2009 influenza A (H1N1) viruses.

Local Flu Activity Dashboard *(All data are preliminary and may change as more reports are received.)*

Indicators	Week Number Available	Current Week Value	% Change Chart from Last Week [‡] (-) (+)	# Weeks [*] ▲ • ▼	General Trend Chart
Hospital Lab Data	1	1.1% Pos.	-17.0% 	2 ▼	
ILI Outpatient Data (Sentinel Medical Sites)	52	0.27% of All Visits	 93.4%	2 ▲	
Hospital ED Data [†] :					
Coded as ILI	52	4.5% of All ED Visits	-3.4% 	1 ▼	
Complaint Defined as ILI	1	20.1% of All ED Visits	-5.1% 	1 ▼	
Categorized as Respiratory	1	16.9% of All ED Visits	-6.7% 	1 ▼	
Pediatric Urgent Care Data [†] :					
Complaint Defined as ILI [‡]	1	47.2% of All PUC Visits	-20.0% 	1 ▼	
Categorized as Respiratory	1	44.6% of All PUC Visits	-22.6% 	1 ▼	
School Absences	1	8.95% Absent	NA	NA	
Death Certificate Pneumonia & Influenza Deaths [†]	1	7.14% of All Deaths	 14.3%	1 ▲	
Medication Data:					
OTC Cough & Cold Sales	1	7,642 Total Sales	 9.8%	1 ▲	
Thermometer	1	166 Total Sales	-3.5% 	2 ▼	
Antiviral Prescriptions	1	0.82% of All Anti-Infectives	-19.0% 	10 ▼	
Influenza Associated Hospitalization	1 (as of 1/12 12:00 PM)	1 Case Reported	 100.0%	1 ▲	

Cumulative Numbers as of August 1 - Jan. 12, 2009*, 12:00 PM

Reportable Conditions**	Suspected	Confirmed
Influenza Clusters/Outbreaks Reported	1	0
Influenza Associated Hospitalizations (IAH) Reported	1	460
IAH Confirmed Pandemic (H1N1) 2009§	Not Available	268
Pediatric Influenza Associated Death Reported	0	2

*Numbers subject to fluctuations as lab results are received and suspects are determined confirmed or not a case. Due to reporting variations, these numbers may represent an undercount.

**Based on assigned jurisdiction being Franklin County or City of Columbus and date case was created on the Ohio Disease Reporting System.

‡Interpret with caution. Indicators with small number subject to large weekly percentage fluctuations.

§Information provided for references (Reportable condition is any influenza associated hospitalization, regardless of influenza type).

†Franklin County, OH residents only (based on zipcode)

¥ Number of weeks "▲" = Increase (>2%), "▼" = Decrease (>2%), "●" = Stable (-2% to +2%)

CDC 122-Cities Mortality Reporting System: Pneumonia and Influenza (P&I) Mortality

In week 1 of 2009 (Jan. 3rd, 2009 – Jan. 9th, 2010), 7.1% of all Columbus deaths were reported as due to pneumonia or influenza (Figure 1). Nationally, 7.4% of deaths reported were due to pneumonia or influenza in week 52. This national percentage was below the national epidemic threshold of 7.5%.

Influenza Morbidity and Influenza-Like Illness (ILI) Reports

Outpatient visits for ILI at sentinel medical practice reporting sites (0.27% of all visits reported) increased in week 52 compared to the previous week. The week 52 percentage of Franklin County resident BioSense ED hospital encounters is 4.5% for ILI coded chief complaints and 1.5% for ILI diagnosis (Figure 2). Specific complaints of influenza and defined influenza like illness symptoms in week 1 have decreased compared to the previous week for ED and Pediatric Urgent Care sites (Figures 2-4). In week 1, the ED percentage of visits for ILI defined symptoms is similar to the weekly average typically seen in past seasons.

Nationally, during week 52 of 2009, 2.4% of patient visits reported through the US Outpatient Influenza-like Illness Surveillance Network (ILINet), were due to influenza-like illness (ILI). This percentage has decreased compared to the previous week. This percentage is slightly above the national baseline of 2.3%.

Laboratory Surveillance

During week 1 of 2010, reporting Franklin County sentinel laboratories tested 348 specimens, with 4 (1.15%) positive (Figure 5). The total number of tests done by local reporting labs from week 35 of 2009 through week 1 of 2010 is 14,652, with 2,201 positives (2,191 type A, 10 type B). Nationally, during week 52, WHO and NREVSS laboratories reported 4,180 specimens tested for influenza viruses, 161 (3.9%) of which were positive (Figure 3). During week 52, influenza B viruses co-circulated at low levels with 2009 influenza A (H1N1) viruses. All subtyped influenza A viruses reported to CDC this week were 2009 influenza A (H1N1) viruses. See <http://www.cdc.gov/flu/weekly/> for a comprehensive national report.

The table below shows 2009-10 (starting August 30th, 2009) cumulative PCR and culture influenza lab results from ODH lab (totals as of 1/11/2010).

Location	# Seasonal A (H1)	# Seasonal A (H3)	# Seasonal B	# Pandemic A (H1)	# PCR Influenza Not Detected
Franklin County	0	0	0	140*	272
Ohio	1	1	0	1,186*	1,688

Source: ODH Lab (based on county of provider submitting specimen, not county of patient's residence)

*Not an official count of Pandemic Influenza A (H1N1) in Franklin County or Ohio. Similar to the CDC and ODH, individual case counts are no longer being tracked. Testing at ODH is limited to those meeting criteria. See <http://www.cdc.gov/flu/weekly/> or <http://www.cdrcinfo.com/H1N1flu.html> for more details.

ED and Pediatric Urgent Care Respiratory Visits

In the 1st week of 2010, the percentage of all ED visits categorized as *respiratory* (16.9%) was lower than the percentage seen the previous week. The percentage of reporting Pediatric Urgent Care visits categorized as *respiratory* (45%) was also lower than the previous week (Figure 6).

Over-the-Counter Medication Sales and Antiviral Prescriptions

In week 1 of 2010, there were increases in most of the OTC medication being tracked (cough & cold, electrolytes, chest rubs, adult anti-fever, throat lozenges) with the exception of slight decreases in thermometer and pediatric anti-fever sales (Figure 7). In week 52 (latest week available), the percentage of Franklin County pharmacy prescriptions for antivirals, out of all anti-infective prescriptions, decreased for the 10th week in a row (Figure 8). During week 52, the national antiviral prescription percentage also decreased.

Additional Influenza Activity Web Links:

National Pandemic H1N1 Situation Updates: <http://www.cdc.gov/h1n1flu/update.htm>

International Pandemic H1N1 Activity Map: <http://www.cdc.gov/h1n1flu/updates/international/map.htm>

World health Organization Situation Updates: <http://www.who.int/csr/disease/swineflu/updates/en/index.html>

Columbus & Franklin County Influenza Monitoring Summary – Week 1 (1/3/2010-1/9/2010)

Figure 1: Percentage of Deaths due to Pneumonia and Influenza Columbus, Ohio 2009-10

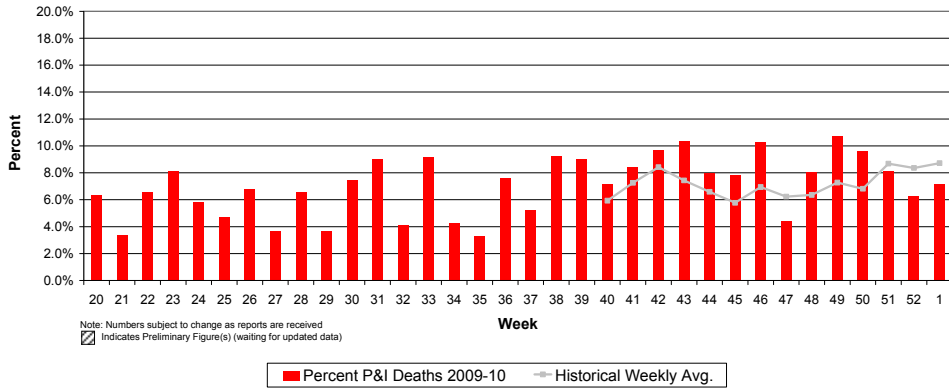


Figure 2: Percentage of Local, National, and HHS Region 5 ILI Outpatient visits and Percentage of Franklin County Resident BioSense Hospital ILI ED Visits, 2009-10

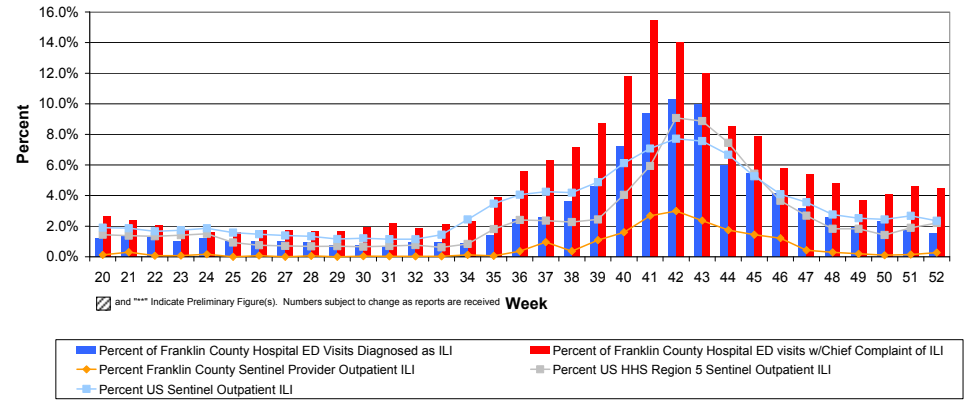


Figure 3: Franklin County Resident ILI Specific Complaint ED and Pediatric Urgent Care Visits, 2009-10, Franklin County, OH

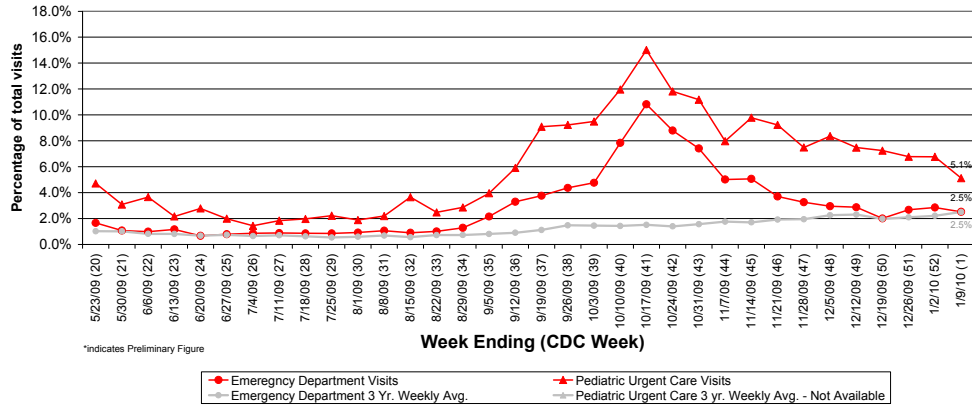
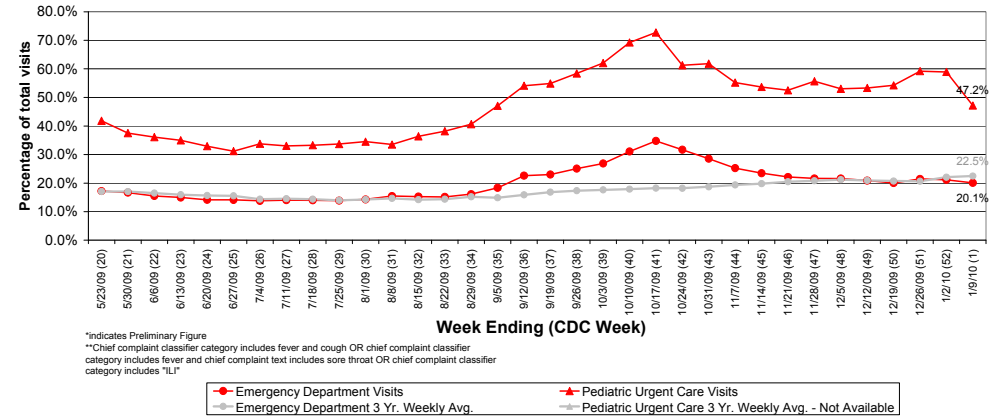


Figure 4: Franklin County Resident ILI Defined ED and Pediatric Urgent Care Visits, 2009-10, Franklin County, OH**



Columbus & Franklin County Influenza Monitoring Summary – Week 1 (1/3/2010-1/9/2010)

Figure 5: Percentage of Local Reporting and National Laboratory Positive Influenza Tests by Week, 2009-10

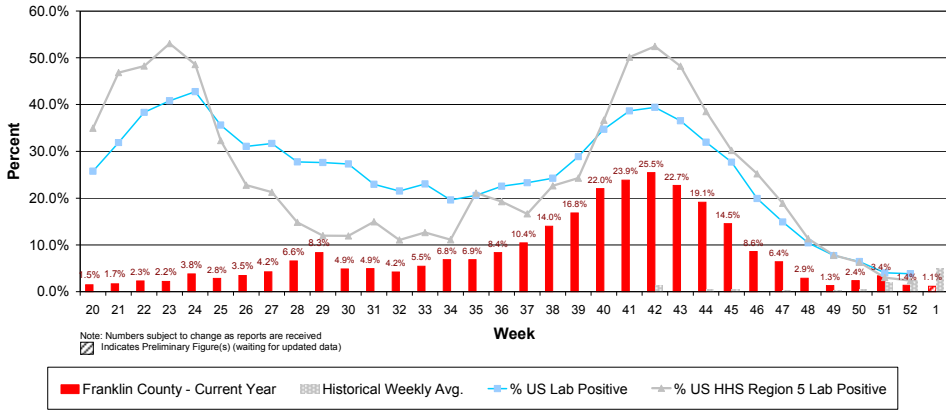


Figure 6: Franklin County Resident Respiratory ED and Pediatric Urgent Care Visits, 2009-10, Franklin County, OH

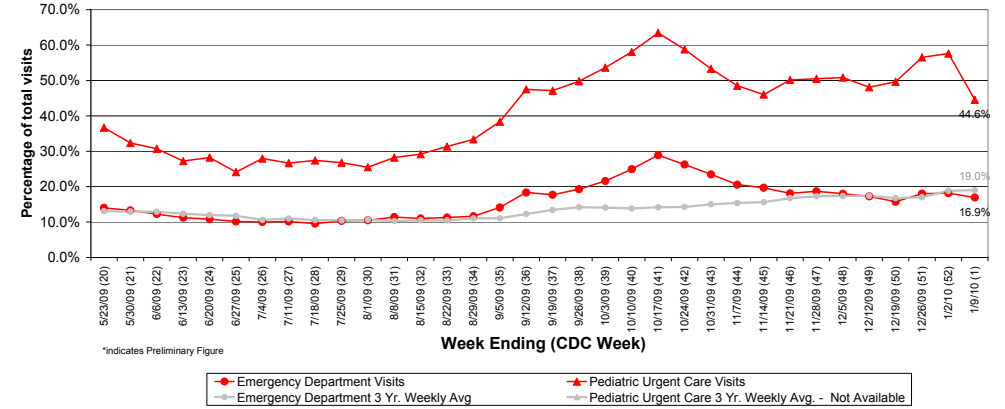


Figure 7: Selected Number of Over-the-Counter Medication Sales and Weekly Baseline Averages and Medians, 2009-10, Franklin County, OH

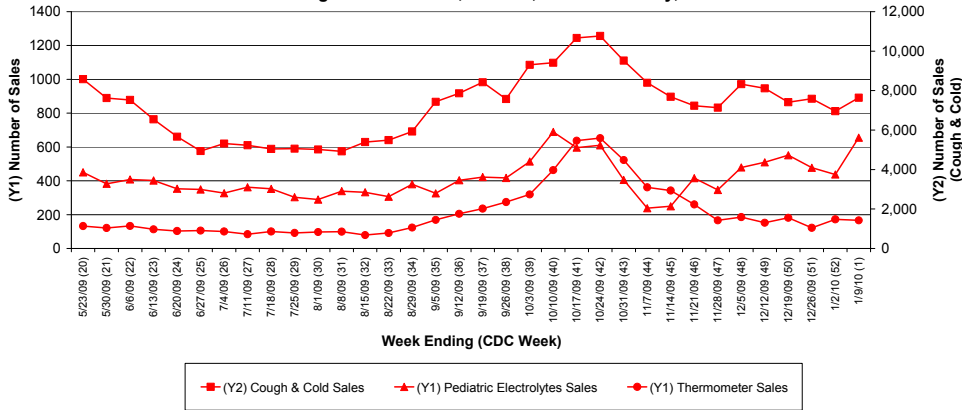


Figure 8: Percentage of Antiviral Prescriptions out of Total Number of Anti-Infective Prescriptions (Selected Pharmacies)

