

# 2009-2010 Columbus & Franklin County Seasonal Influenza Activity Weekly Summary (Week 2, Jan. 10<sup>th</sup> – Jan. 16<sup>th</sup>, 2010)

## Summary & Highlights

Similar to the previous week, week 2 local influenza activity indicators showed a mixture of decreases and increases. Overall, ILI Outpatient Sentinel Sites, ED visits, and labs are at or below seasonal historical baseline levels.

- Local Geographic Activity Designation (Click [here](#) for definitions) = SPORADIC
- Hospital labs reported 336 tests run with 1 positive result (0.3%) for week 2, this percentage positive is lower than the previous week and is lower than the historical baseline average.
- Except for a slight increase in pediatric urgent care (PUC) influenza-like-illness (ILI) visits, hospital emergency department (ED) and PUC ILI indicators and respiratory related visits had slight decreases compared to the previous week. Figures for ED visits are similar to the historical baseline average for this time of year.
- Sales of over-the-counter medications were generally lower or unchanged, with decreases in cough and cold and throat lozenges; slight decreases in chest rubs and electrolytes; virtually no change in thermometer; and increases in anti-fever sales. A decrease in antiviral prescriptions was also reported in week 1 (most recent week available).
- Nationally, during week 1, influenza B viruses co-circulated at low levels with 2009 influenza A (H1N1) viruses. All sub-typed influenza A viruses reported to CDC this week were 2009 influenza A (H1N1) viruses.

## Local Flu Activity Dashboard *(All data are preliminary and may change as more reports are received.)*

Indicators	Week Number Available	Current Week Value	% Change Chart from Last Week <sup>‡</sup> (-)   (+)	# Weeks <sup>¥</sup> ▲ • ▼	General Trend Chart
Medical Facility Lab Data	2	0.3% Pos.	-81.0%	1 ▼	
ILI Outpatient Data (Sentinel Medical Sites)	1	0.36% of All Visits	57.3%	3 ▲	
Hospital ED Data†:					
Coded as ILI	1	3.5% of All ED Visits	-21.0%	2 ▼	
Complaint Defined as ILI	2	18.5% of All ED Visits	-7.6%	2 ▼	
Categorized as Respiratory	2	14.7% of All ED Visits	-13.4%	2 ▼	
Pediatric Urgent Care Data†:					
Complaint Defined as ILI	2	49% of All PUC Visits	3.9%	1 ▲	
Categorized as Respiratory	2	42.7% of All PUC Visits	-4.3%	2 ▼	
School Absences	2	8.37% Absent	-6.5%	1 ▼	
Death Certificate Pneumonia & Influenza Deaths†	2	11.67% of All Deaths	63.3%	2 ▲	
Medication Data:					
OTC Cough & Cold Sales	2	6,002 Total Sales	-21.5%	1 ▼	
Thermometer	2	168 Total Sales	1.2%	1 •	
Antiviral Prescriptions	2	0.76% of All Anti-Infectives	-8.1%	11 ▼	
Influenza Associated Hospitalizations	2 (as of 1/20 12:00 PM)	0 Reported	-100.0%	1 ▼	

Reportable Conditions**	Cumulative Numbers as of August 1 - Jan. 20, 2010*, 12:00 PM	
	Suspected	Confirmed
Influenza Clusters/Outbreaks Reported	1	0
Influenza Associated Hospitalizations (IAH) Reported	1	460
IAH Confirmed Pandemic (H1N1) 2009§	Not Available	268
Pediatric Influenza Associated Death Reported	0	2

\*Numbers subject to fluctuations as lab results are received and suspects are determined confirmed or not a case. Due to reporting variations, these numbers may represent an undercount.

\*\*Based on assigned jurisdiction being Franklin County or City of Columbus and date case was created on the Ohio Disease Reporting System.

‡Interpret with caution. Indicators with small number subject to large weekly percentage fluctuations.

§Information provided for references (Reportable condition is any influenza associated hospitalization, regardless of influenza type).

†Franklin County, OH residents only (based on zipcode)

¥ Number of weeks "▲" = Increase (>2%), "▼" = Decrease (>2%), "•" = Stable (-2% to +2%)

### CDC 122-Cities Mortality Reporting System: Pneumonia and Influenza (P&I) Mortality

In week 2 of 2009 (Jan. 10<sup>th</sup>, 2009 – Jan. 16<sup>th</sup>, 2010), 11.7% of all Columbus deaths were reported as due to pneumonia or influenza (Figure 1). Nationally, 7.3% of deaths reported were due to pneumonia or influenza in week 52. This national percentage was below the national epidemic threshold of 7.6%.

### Influenza Morbidity and Influenza-Like Illness (ILI) Reports

Outpatient visits for ILI at sentinel medical practice reporting sites (0.36% of all visits reported) increased in week 1 compared to the previous week. The week 1 percentage of Franklin County resident BioSense ED hospital encounters is 3.5% for ILI coded chief complaints and 1.4% for ILI diagnosis (Figure 2). Specific complaints of influenza and defined influenza like illness symptoms in week 2 have decreased compared to the previous week for ED sites and increased slightly for PUC sites (Figures 2-4). In week 2, the ED percentage of visits for ILI defined symptoms is slightly lower than the weekly average typically seen in past seasons.

Nationally, during week 1 of 2010, 1.9% of patient visits reported through the US Outpatient Influenza-like Illness Surveillance Network (ILINet), were due to influenza-like illness (ILI). This percentage has decreased compared to the previous week. This percentage is below the national baseline of 2.3%.

### Laboratory Surveillance

During week 2 of 2010, reporting Franklin County sentinel laboratories tested 336 specimens, with 1 (0.3%) positive (Figure 5). The total number of tests done by local reporting labs from week 35 of 2009 through week 2 of 2010 is 15,016, with 2,204 positives (2,194 type A, 10 type B). Nationally, during week 1, WHO and NREVSS laboratories reported 3,886 specimens tested for influenza viruses, 139 (3.6%) of which were positive (Figure 3). During week 1, influenza B viruses co-circulated at low levels with 2009 influenza A (H1N1) viruses. All sub-typed influenza A viruses reported to CDC this week were 2009 influenza A (H1N1) viruses. See <http://www.cdc.gov/flu/weekly/> for a comprehensive national report.

The table below shows 2009-10 (starting August 30<sup>th</sup>, 2009) cumulative PCR and culture influenza lab results from ODH lab (totals as of 1/18/2010).

Location	# Seasonal A (H1)	# Seasonal A (H3)	# Seasonal B	# Pandemic A (H1)	# PCR Influenza Not Detected
Franklin County	0	0	0	140*	272
Ohio	1	1	0	1,188*	1,706

Source: ODH Lab (based on county of provider submitting specimen, not county of patient's residence)

\*Not an official count of Pandemic Influenza A (H1N1) in Franklin County or Ohio. Similar to the CDC and ODH, individual case counts are no longer being tracked. Testing at ODH is limited to those meeting criteria. See <http://www.cdc.gov/flu/weekly/> or <http://www.cdrcinfo.com/H1N1flu.html> for more details.

### ED and Pediatric Urgent Care Respiratory Visits

In the 2<sup>nd</sup> week of 2010, the percentage of all ED visits categorized as *respiratory* (14.7%) was lower than the percentage seen the previous week. The percentage of reporting Pediatric Urgent Care visits categorized as *respiratory* (42.7%) was also lower than the previous week (Figure 6).

### Over-the-Counter (OTC) Medication Sales and Antiviral Prescriptions

In week 2 of 2010, OTC medications being tracked were generally lower or unchanged, with decreases in cough and cold and throat lozenges; slight decreases in chest rubs and electrolytes; virtually no change in thermometer; and increases in anti-fever sales (Figure 7). In week 1 (latest week available), the percentage of Franklin County pharmacy prescriptions for antivirals, out of all anti-infective prescriptions, decreased for the 11<sup>th</sup> week in a row (Figure 8). During week 1, the national antiviral prescription percentage also decreased.

### Additional Influenza Activity Web Links:

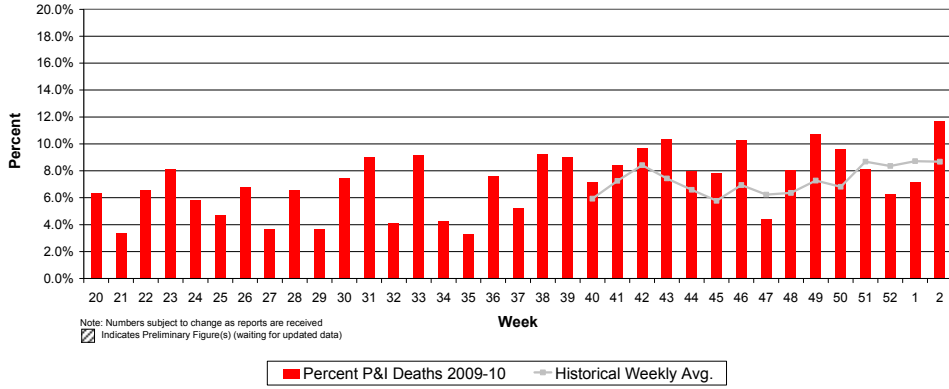
National Pandemic H1N1 Situation Updates: <http://www.cdc.gov/h1n1flu/update.htm>

International Pandemic H1N1 Activity Map: <http://www.cdc.gov/h1n1flu/updates/international/map.htm>

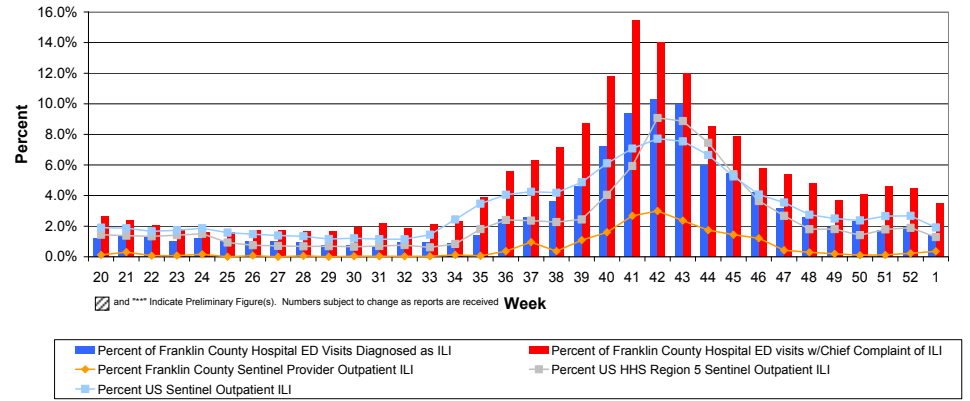
World health Organization Situation Updates: <http://www.who.int/csr/disease/swineflu/updates/en/index.html>

# Columbus & Franklin County Influenza Monitoring Summary – Week 1 (1/10/2010-1/16/2010)

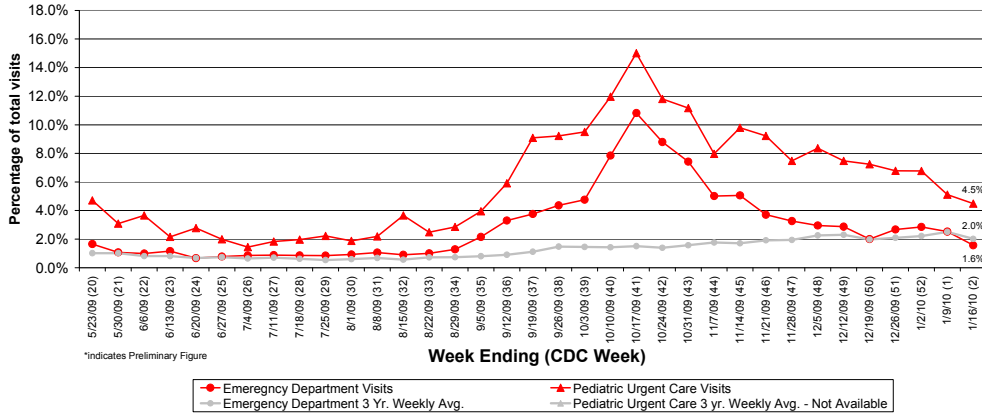
**Figure 1: Percentage of Deaths due to Pneumonia and Influenza Columbus, Ohio 2009-10**



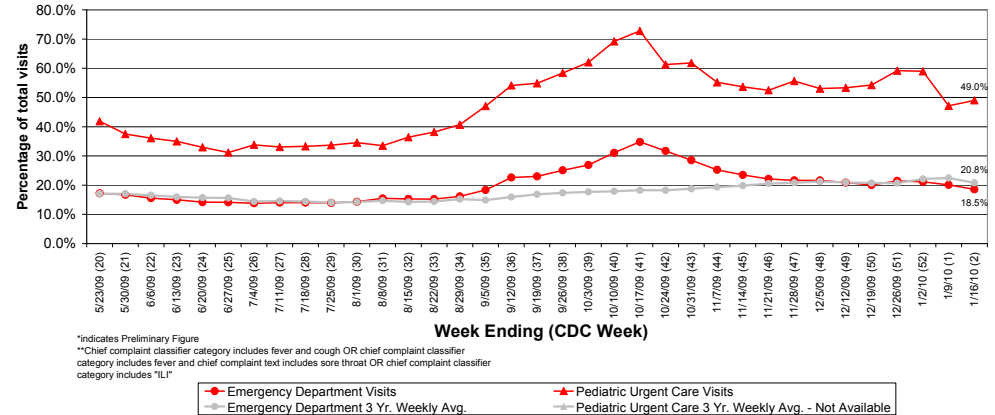
**Figure 2: Percentage of Local, National, and HHS Region 5 ILI Outpatient visits and Percentage of Franklin County Resident BioSense Hospital ILI ED Visits, 2009-10**



**Figure 3: Franklin County Resident ILI Specific Complaint ED and Pediatric Urgent Care Visits, 2009-10, Franklin County, OH**

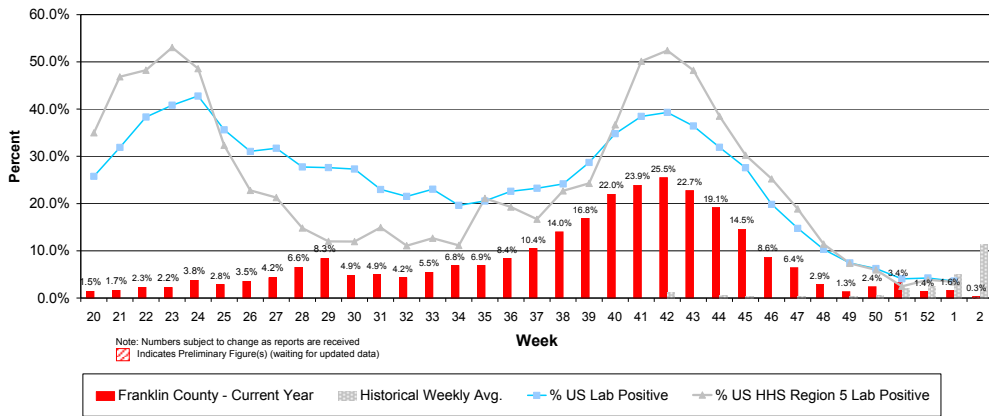


**Figure 4: Franklin County Resident ILI Defined\*\* ED and Pediatric Urgent Care Visits, 2009-10, Franklin County, OH**

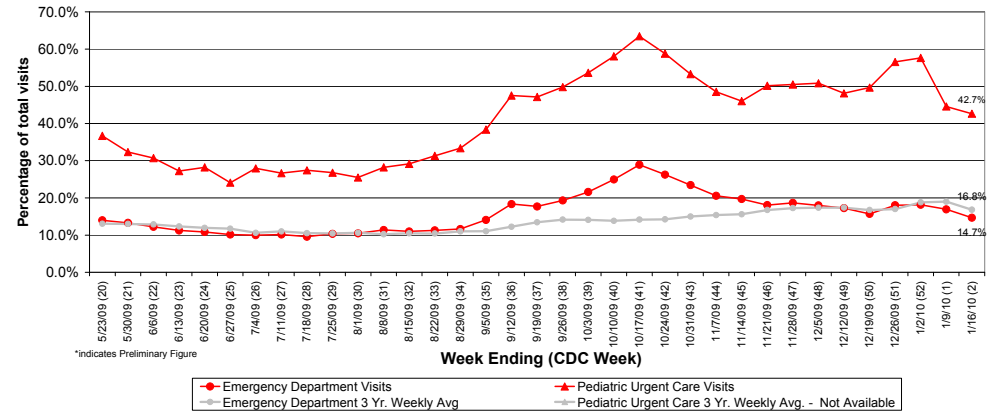


# Columbus & Franklin County Influenza Monitoring Summary – Week 1 (1/10/2010-1/16/2010)

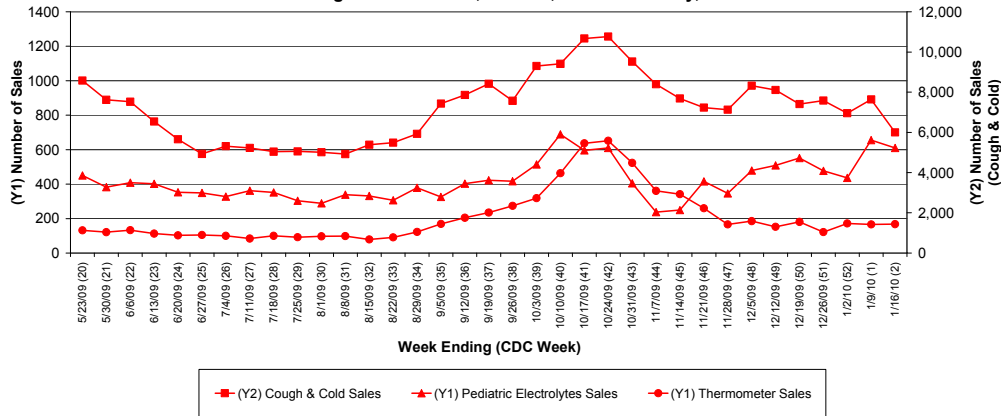
**Figure 5: Percentage of Local Reporting and National Laboratory Positive Influenza Tests by Week, 2009-10**



**Figure 6: Franklin County Resident Respiratory ED and Pediatric Urgent Care Visits, 2009-10, Franklin County, OH**



**Figure 7: Selected Number of Over-the-Counter Medication Sales and Weekly Baseline Averages and Medians, 2009-10, Franklin County, OH**



**Figure 8: Percentage of Antiviral Prescriptions out of Total Number of Anti-Infective Prescriptions (Selected Pharmacies)**

