

Summary & Highlights

While some Columbus and Franklin County influenza activity indicators continue to show decreases, others show signs of stabilization and adjustment toward typical seasonal values and others show increases in week 48.

- Local Geographic Activity Designation (Click [here](#) for definitions) = LOCALIZED
- Hospital labs reported 410 tests run with 12 positive results (2.9%) for week 48, 54% lower than the previous week.
- Hospital emergency department (ED) and pediatric urgent care (PUC) ILI indicators and respiratory related visits appear to have stabilized, with figures for ED visits hovering at the average for this time of year.
- School absences increased slightly in week 48 compared to the previous week, but is similar to the average for this time of year
- In week 48, most of the selected over-the-counter medication sales being tracked increased to a certain degree (thermometers, pediatric and adult anti-fevers, throat lozenges, cough & cold) compared to the previous week. A decrease in antiviral prescriptions was reported in week 47 (most recent week available).
- Nationally, seasonal influenza A (H1N1) and influenza B viruses co-circulated at low levels with 2009 influenza A (H1N1) viruses in week 47. Over 99% of all subtyped influenza A viruses reported to CDC were 2009 influenza A (H1N1) viruses.

Local Flu Activity Dashboard (All data are preliminary and may change as more reports are received.)

Indicators	Most Complete Week Available	Current Week Value	% Change Chart from Last Week (-) (+)	# Weeks [¥] ▲ ● ▼	General Trend Chart
Hospital Lab Data	48	2.9% Pos.	-54.0%	6 ▼	
ILI Outpatient Data (Sentinel Medical Sites)	48	0.37% of All Visits	-22.7%	6 ▼	
Hospital ED Data†:					
Coded as ILI	46	4.8% of All ED Visits	-31.8%	5 ▼	
Complaint Defined as ILI‡	48	21.6% of All ED Visits	-0.1%	1 ●	
Categorized as Respiratory	48	18.% of All ED Visits	-3.6%	1 ▼	
Pediatric Urgent Care Data†:					
Complaint Defined as ILI‡	48	53.% of All PUC Visits	-4.7%	1 ▼	
Categorized as Respiratory	48	50.8% of All PUC Visits	0.6%	2 ●	
School Absences	48	7.6% Absent	6.3%	2 ▲	
Death Certificate Pneumonia & Influenza Deaths†	48	8.03% of All Deaths	80.7%	1 ▲	
Medication Data:					
OTC Cough & Cold Sales	48	8,324 Total Sales	16.7%	1 ▲	
Thermometer	48	185 Total Sales	11.4%	1 ▲	
Antiviral Prescriptions	47	2.4% of All Anti-Infectives	-25.1%	5 ▼	
Influenza Associated Hospitalization	48 (as of 12/9 12:00 PM)	4 Cases Reported	-55.6%	6 ▼	

Reportable Conditions**	Cumulative Numbers as of August 1 - Dec. 9, 2009*, 12:00 PM	
	Suspected	Confirmed
Influenza Clusters/Outbreaks Reported	1	0
Influenza Associated Hospitalizations (IAH) Reported	2	449
IAH Confirmed Pandemic (H1N1) 2009§	Not Available	261
Pediatric Influenza Associated Death Reported	0	2

*Numbers subject to fluctuations as lab results are received and suspects are determined confirmed or not a case. Due to reporting variations, these numbers may represent an undercount.

**Based on assigned jurisdiction being Franklin County or City of Columbus and date case was created on the Ohio Disease Reporting System.

§Information provided for references (Reportable condition is any influenza associated hospitalization, regardless of influenza type).

†Franklin County, OH residents only (based on zipcode); ‡Broader definition used than initial weekly reports to encompass more potential ILI.

¥ Number of weeks "▲" = Increase (>2%), "▼" = Decrease (>2%), "●" = Stable (-2% to +2%)

Pneumonia and Influenza (P&I) Mortality

In week 48 of 2009 (Nov. 29th, 2009 – Dec. 5th, 2009), 8.0% of all Columbus deaths were reported as due to pneumonia or influenza (Figure 1). Nationally, 7.2% of deaths reported were due to pneumonia or influenza in week 47. This national percentage was slightly above to the national epidemic threshold of 7.1%.

Influenza Morbidity and Influenza-Like Illness (ILI) Reports

Outpatient visits for ILI at sentinel medical practice reporting sites (0.37% of all visits reported) decreased in week 48 compared to the previous week. At the time of this report, the BioSense application was not available, therefore ED hospital encounters for ILI coded chief complaints and ILI diagnosis will be updated next week (Figure 2). For the most part, specific complaints of influenza and defined influenza like illness symptoms have stabilized for ED and Pediatric Urgent Care sites, although a slight increase in PUC specific complaints is noted in week 48 (Figures 2-4). In week 48, the ED percentage of visits for ILI defined symptoms is nearly identical the weekly average typically seen in past seasons.

Nationally, during week 47 of 2009, 3.7% of patient visits reported through the US Outpatient Influenza-like Illness Surveillance Network (ILINet), were due to influenza-like illness (ILI). This is the 5th week in a row that the national percentage has decreased. This percentage is still above the national baseline of 2.3%.

Laboratory Surveillance

During week 48 of 2009, reporting Franklin County sentinel laboratories tested 410 specimens, with 12 (2.9%) positive (Figure 5). The total number of tests done by local reporting labs from week 35 through week 48 is 12,700, with 2,164 positives (2,154 type A, 10 type B). Nationally, during week 47, WHO and NREVSS laboratories reported 6,224 specimens tested for influenza viruses, 956 (15.4%) of which were positive (Figures 3). During week 47, seasonal influenza A (H1N1) and influenza B viruses co-circulated at low levels with 2009 influenza A (H1N1) viruses. Over 99% of all subtyped influenza A viruses reported to CDC this week were 2009 influenza A (H1N1) viruses. See <http://www.cdc.gov/flu/weekly/> for a comprehensive national report.

The table below shows 2009-10 (starting August 30th, 2009) cumulative PCR and culture influenza lab results from ODH lab (totals as of 12/7/2009).

Location	# Seasonal A (H1)	# Seasonal A (H3)	# Seasonal B	# Pandemic A (H1)	# PCR Influenza Not Detected
Franklin County	0	0	0	139*	271
Ohio	1	1	0	1,179*	1,463

Source: ODH Lab (based on county of provider submitting specimen, not county of patient's residence)

*Not an official count of Pandemic Influenza A (H1N1) in Franklin County or Ohio. Similar to the CDC and ODH, individual case counts are no longer being tracked. Testing at ODH is limited to those meeting criteria. See <http://www.cdc.gov/flu/weekly/> or <http://www.cdrsinfo.com/H1N1flu.html> for more details.

ED and Pediatric Urgent Care Respiratory Visits

In the 48th week of 2009, the percentage of all ED visits categorized as *respiratory* (18.0%) is similar to the percentage seen the previous week. Also, the percentage of reporting Pediatric Urgent Care visits categorized as *respiratory* (50.8%) is similar to the previous week (Figure 6).

Over-the-Counter Medication Sales and Antiviral Prescriptions

In week 48 of 2009, there were increases in most of the over-the-counter medication sales being tracked, including cough & cold medication, electrolytes, thermometers, pediatric and adult anti-fever, and throat lozenges (Figure 7). In week 47 (latest week available), the percentage of Franklin County pharmacy prescriptions for antivirals, out of all anti-infective prescriptions, decreased for the 5th week in a row (Figure 8). During week 47, the national antiviral prescription percentage also decreased.

Additional Influenza Activity Web Links:

National Pandemic H1N1 Situation Updates: <http://www.cdc.gov/h1n1flu/update.htm>

International Pandemic H1N1 Activity Map: <http://www.cdc.gov/h1n1flu/updates/international/map.htm>

World health Organization Situation Updates: <http://www.who.int/csr/disease/swineflu/updates/en/index.html>

Columbus & Franklin County Influenza Monitoring Summary – Week 48 (11/29/09-12/5/09)

Figure 1: Percentage of Deaths due to Pneumonia and Influenza Columbus, Ohio 2009-10

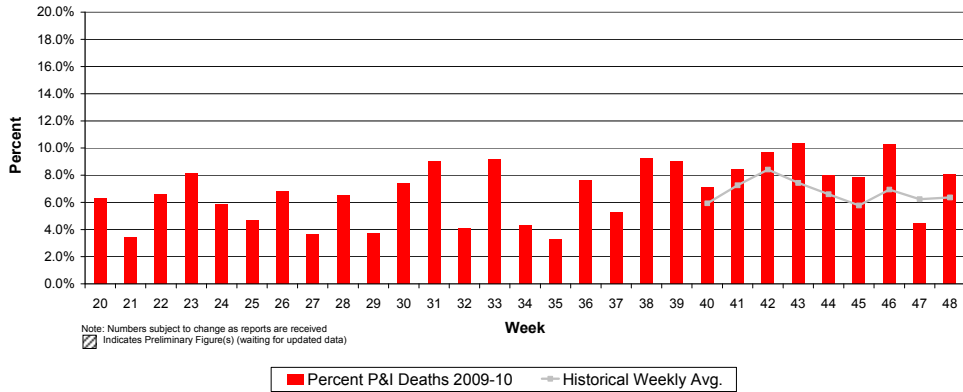


Figure 2: Percentage of Local, National, and HHS Region 5 ILI Outpatient visits and Percentage of Franklin County Resident BioSense Hospital ILI ED Visits, 2009-10

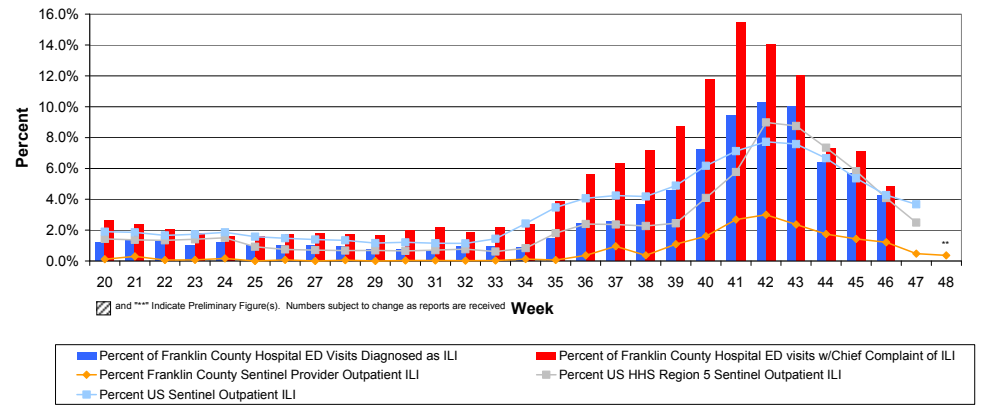


Figure 3: Franklin County Resident ILI Specific Complaint ED and Pediatric Urgent Care Visits, 2009-10, Franklin County, OH

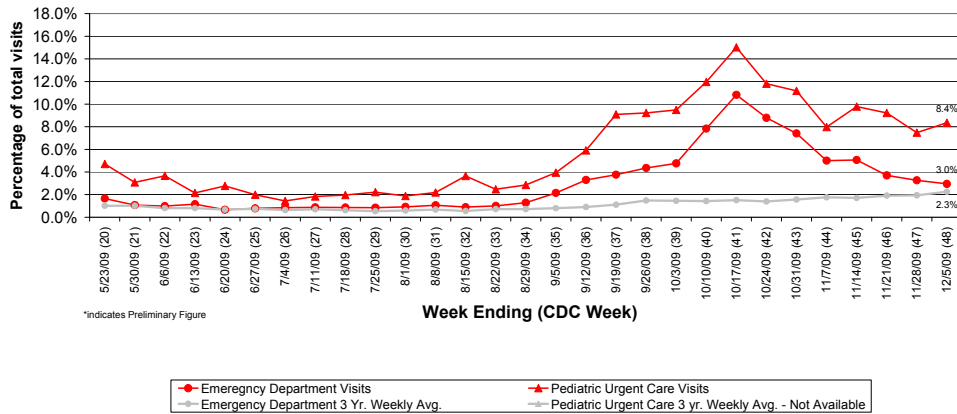
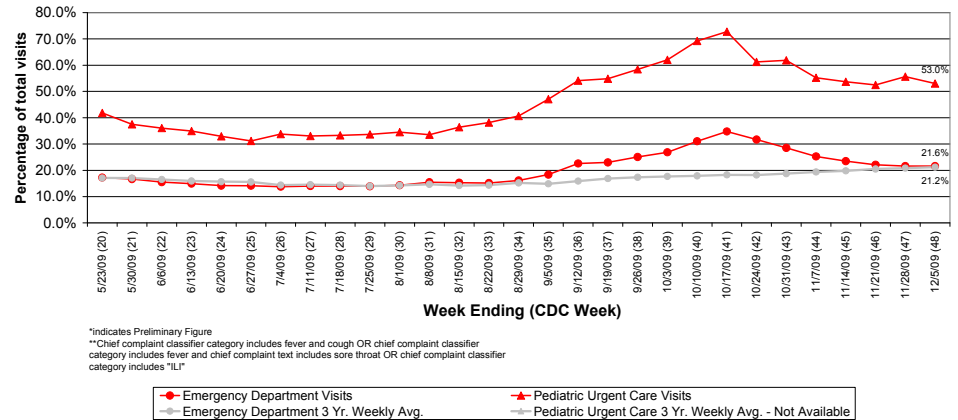


Figure 4: Franklin County Resident ILI Defined ED and Pediatric Urgent Care Visits, 2009-10, Franklin County, OH**



Columbus & Franklin County Influenza Monitoring Summary – Week 48 (11/29/09-12/5/09)

Figure 5: Percentage of Local Reporting and National Laboratory Positive Influenza Tests by Week, 2009-10

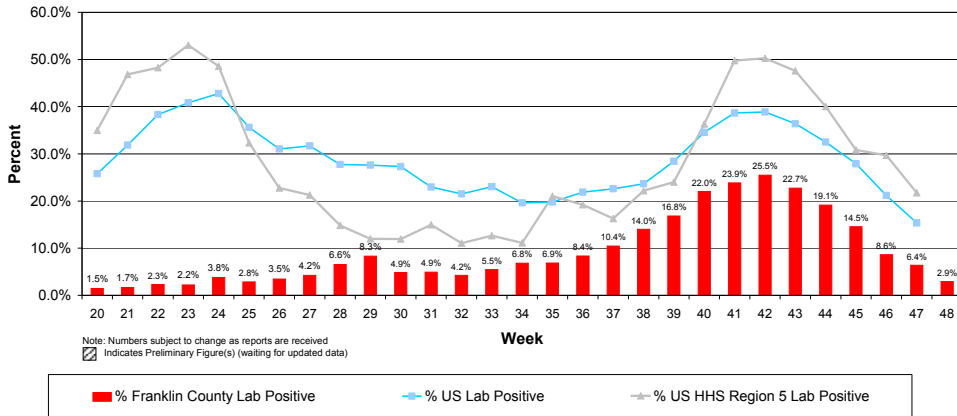


Figure 6: Franklin County Resident Respiratory ED and Pediatric Urgent Care Visits, 2009-10, Franklin County, OH

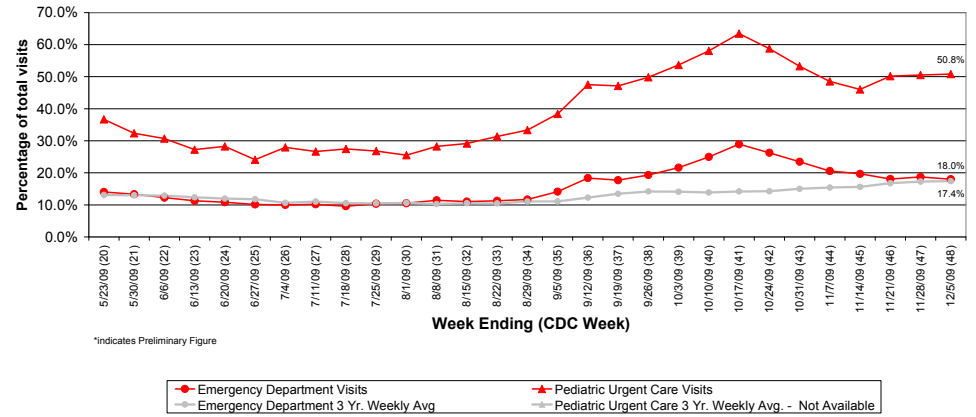


Figure 7: Selected Number of Over-the-Counter Medication Sales and Weekly Baseline Averages and Medians, 2009-10, Franklin County, OH

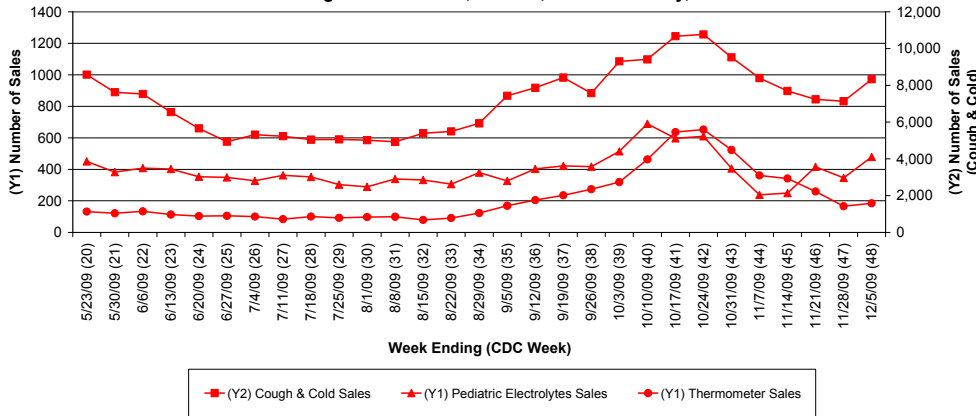


Figure 8: Percentage of Antiviral Prescriptions out of Total Number of Anti-Infective Prescriptions (Selected Pharmacies)

