

2009-2010 Columbus & Franklin County Seasonal Influenza Activity Weekly Summary (Week 8, Feb. 21st – Feb. 27th)

Summary & Highlights

Overall, week 8 local influenza activity indicators continue to show relatively stable trends. ILI Outpatient Sentinel Sites, ED visits, and labs are currently below seasonal historical baseline levels.

- Local Geographic Activity Designation (Click [here](#) for definitions) = SPORADIC
- Preliminary information from medical facility labs reported 305 tests run with 3 positive results (~1.0%) for week 8, this percentage positive is higher than the previous week and is lower than the historical baseline average.
- Overall, ED and Pediatric Urgent Care (PUC) visits for influenza-like-illness (ILI) and respiratory symptom were relatively stable to slightly higher in week 8 compared to the previous week. Figures for ED visits are lower than the historical baseline average for this time of year.
- Sales of over-the-counter medications were mixed; with decreases in electrolytes and pediatric anti-fever meds; increases in adult anti-fever and thermometer sales; and stable chest rub and throat lozenge sales. Updated antiviral prescription information from Franklin County was not available at the time of this report.
- Nationally, during week 7, influenza B viruses co-circulated at low levels with 2009 influenza A (H1N1) viruses. All subtyped influenza A viruses reported to CDC this week were 2009 influenza A (H1N1) viruses.

Local Flu Activity Dashboard *(All data are preliminary and may change as more reports are received.)*

Indicators	Week Number Available	Current Week Value	% Change Chart from Last Week ¹ (-) (+)	# Weeks ² ▲ • ▼	General Trend Chart (If available, ---- line is historical avg.)
Medical Facility Lab Data	8	0.98% Pos.	100%	1 ▲	
ILI Outpatient Data (Sentinel Medical Sites)	8	0.15% of All Visits	-44.9%	1 ▼	
Death Certificate Pneumonia & Influenza Deaths ³	8	9.87% of All Deaths	-9.2%	1 ▲	
School Absences	8	7.22% Absent	-24.0%	2 ▼	
NEW -Columbus Google Flu Trends: Web Search Data ⁴	8	1,400 per 100,000 pop	1.2%	1 •	
Hospital ED Data ³ :					
Complaint Defined as ILI	8	18.3% of All ED Visits	2.3%	1 ▲	
Categorized as Respiratory	8	14.9% of All ED Visits	-2.9%	2 ▼	
Pediatric Urgent Care Data ³ :					
Complaint Defined as ILI	8	48.5% of All PUC Visits	4.5%	1 ▲	
Categorized as Respiratory	8	46.3% of All PUC Visits	3.5%	1 ▲	
Medication Data:					
OTC Cough & Cold Sales	8	6,722 Total Sales	5.3%	1 ▲	
Thermometer	8	152 Total Sales	10.9%	1 ▲	
Antiviral Prescriptions	5	0.55% of All Anti-Infectives	NOTE: Updated data not available at the time of this report		
Confirmed Influenza Associated Hospitalizations	8 (as of 2/23 12:00 PM)	0 Reported	NA ¹	NA ¹	

Reportable Conditions ⁶ (Cumulative Numbers as of Mar. 3, 2010, 12:00 PM)	2009	2010 YTD
Influenza Clusters/Outbreaks Reported	1 suspected	0
Influenza Associated Hospitalizations (IAH) Reported (see also Fig. 8)	523	8
IAH Confirmed 2009 Influenza A (H1N1) ⁵	267	5
Pediatric Influenza Associated Death Reported	2	0

¹Interpret with caution. Indicators with small number subject to large weekly percentage fluctuations.
²Number of weeks "▲" = Increase (>2%), "▼" = Decrease (>2%), "•" = Stable (-2% to +2%)
³Franklin County, OH residents only (based on zipcode).
⁴Data Source: Google Flu Trends (<http://www.google.org/flutrends>), City = Columbus, OH (Experimental). See website for additional details.
⁵Confirmed cases only unless stated otherwise (Based on jurisdiction equal to Franklin County or City of Columbus and date created in ODRS).
⁶Information provided for references (Reportable condition is any influenza associated hospitalization, regardless of influenza type).

CDC 122-Cities Mortality Reporting System: Pneumonia and Influenza (P&I) Mortality

In week 8 of 2009 (Feb. 21st, 2009 – Feb. 27th, 2010), 9.9% of all Columbus deaths were reported as due to pneumonia or influenza (Figure 1). Nationally, 7.4% of deaths reported were due to pneumonia or influenza in week 7. This national percentage is below the national epidemic threshold of 7.9%.

Influenza Morbidity and Influenza-Like Illness (ILI) Reports

The preliminary percentage of outpatient visits for ILI at sentinel medical practice reporting sites (0.15% of all visits reported) decreased in week 8 compared to the previous week, but is below the historical baseline average. At the time of this report, updated percentages of Franklin County resident BioSense ED hospital encounters with ILI coded chief complaints and ILI diagnosis was not available (Figure 2). In EDs and PUC sites, specific complaints of influenza and defined influenza like illness symptoms in week 8 increased slightly compared to the previous week (Figures 2-3). In week 8, the ED percentage of visits for ILI defined symptoms is lower than the weekly average typically seen in past seasons.

Nationally, during week 7 of 2010, 1.8% of patient visits reported through the US Outpatient Influenza-like Illness Surveillance Network (ILINet), were due to influenza-like illness (ILI). This percentage is below the previous week's value and is below the national baseline of 2.3%.

Laboratory Surveillance

During week 8 of 2010, reporting Franklin County sentinel medical facility laboratories tested 305 specimens, with 3 (0.98%) positive (Figure 5). The total number of tests done by local reporting labs from week 35 of 2009 through week 8 of 2010 is 17,219; with 2,225 positives (2,213 type A, 12 type B). Nationally, during week 7, WHO and NREVSS laboratories reported 4,209 specimens tested for influenza viruses, 185 (4.4%) of which were positive (Figure 4). Nationally, during week 7, influenza B viruses co-circulated at low levels with 2009 influenza A (H1N1) viruses. All subtyped influenza A viruses reported to CDC this week were 2009 influenza A (H1N1) viruses. See <http://www.cdc.gov/flu/weekly/> for a comprehensive national report.

The table below shows 2009-10 (starting August 30th, 2009) cumulative PCR and culture influenza lab results from ODH lab (totals as of 3/1/2010).

Location	# Seasonal A (H1)	# Seasonal A (H3)	# Seasonal B	# Pandemic A (H1)	# PCR Influenza Not Detected
Franklin County	0	0	0	141*	272
Ohio	1	1	0	1,191*	1,785

Source: ODH Lab (based on county of provider submitting specimen, not county of patient's residence)

*Not an official count of Pandemic Influenza A (H1N1) in Franklin County or Ohio. Similar to the CDC and ODH, individual case counts are no longer being tracked. Testing at ODH is limited to those meeting criteria. See <http://www.cdc.gov/flu/weekly/> or <http://www.cdcsinfo.com/H1N1flu.html> for more details.

ED and Pediatric Urgent Care Respiratory Visits

In the 8th week of 2010, the percentage of all ED visits categorized as *respiratory* (14.9%) decreased slightly compared to the percentage seen the previous week and is lower than the historic baseline. The percentage of reporting Pediatric Urgent Care visits categorized as *respiratory* (46.3%) increased slightly compared to the percentage seen in the previous week (Figure 5).

Over-the-Counter (OTC) Medication Sales and Antiviral Prescriptions

In week 8 of 2010, OTC medications sale volume trends were mixed compared to the previous week. Decreases in OTC medication sales were seen in electrolytes and pediatric anti-fever meds; increases in cough and cold, thermometer, and adult anti-fever medication sales; and stable throat lozenge and chest rub sales (Figure 6). Week 7 updated antiviral prescription information for Franklin County was not available at the time of this report. During week 7, the national antiviral prescription percentage was similar to the previous week.

Additional Influenza Activity Web Links:

National Pandemic H1N1 Situation Updates: <http://www.cdc.gov/h1n1flu/update.htm>

International Pandemic H1N1 Activity Map: <http://www.cdc.gov/h1n1flu/updates/international/map.htm>

World health Organization Situation Updates: <http://www.who.int/csr/disease/swineflu/updates/en/index.html>

Columbus & Franklin County Influenza Monitoring Summary – Week 8 (2/21/2010-2/27/2010)

**Figure 1: Percentage of Deaths due to Pneumonia and Influenza
Columbus, Ohio 2009-10**

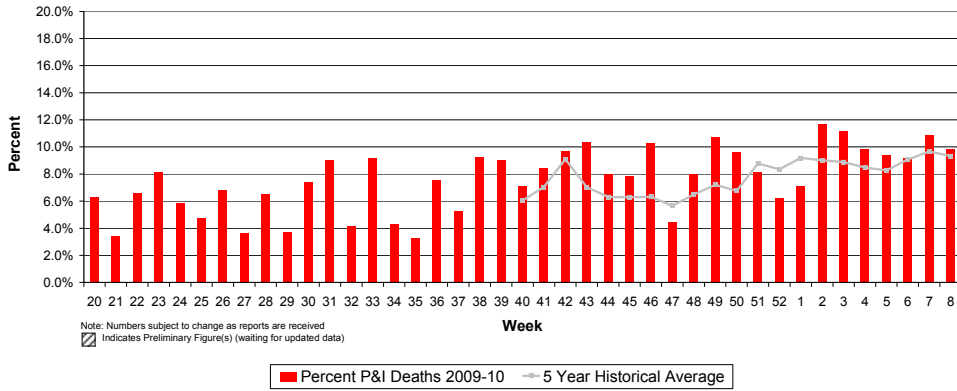


Figure 2: Percentage of Local, National, and HHS Region 5 ILI Outpatient visits and Percentage of Franklin County Resident BioSense Hospital ILI ED Visits, 2009-10

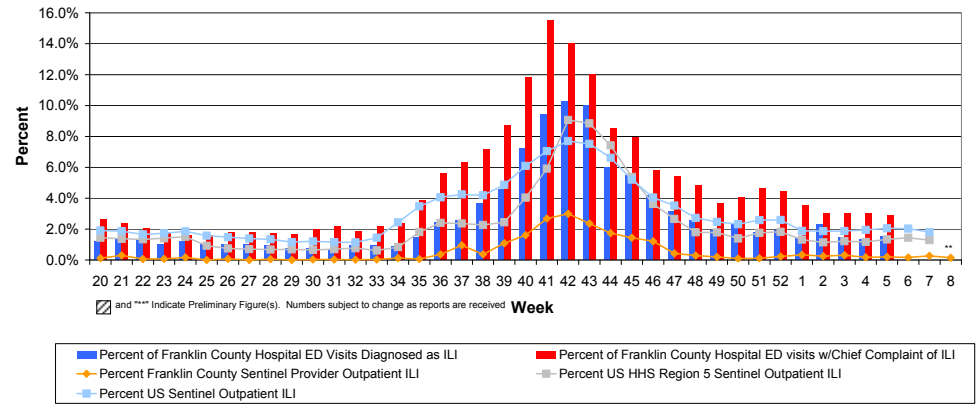


Figure 3: Franklin County Resident Respiratory ED and Pediatric Urgent Care Visits, 2009-10, Franklin County, OH

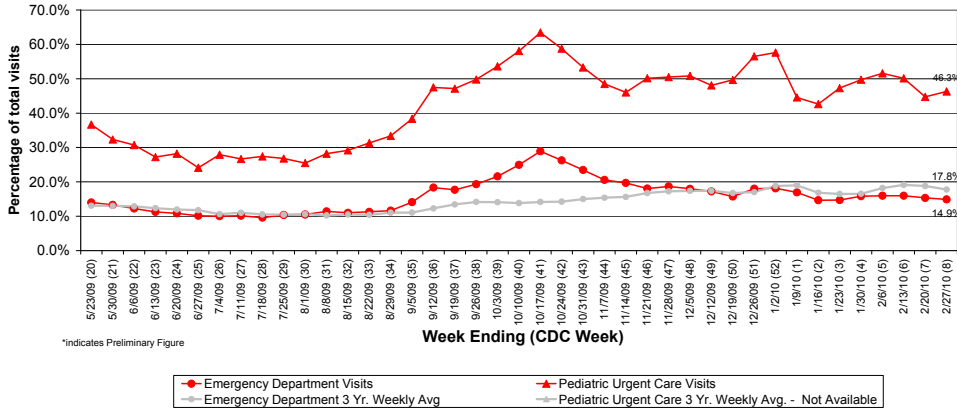
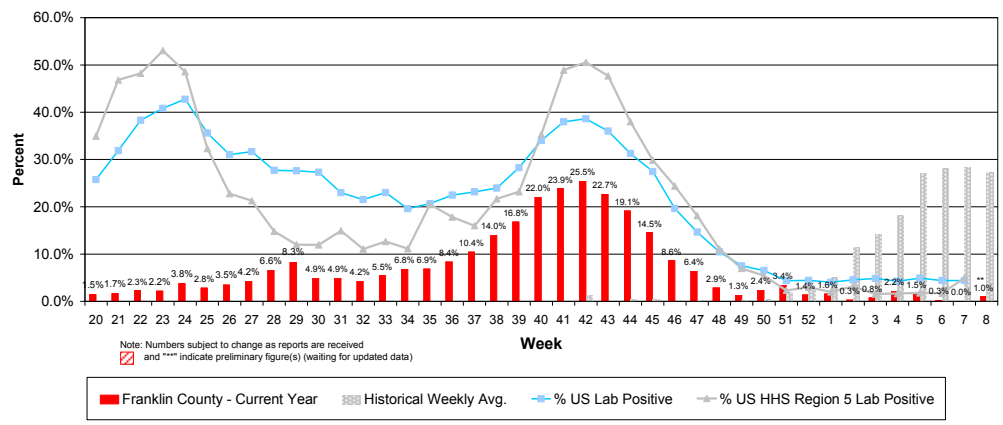


Figure 4: Percentage of Local Reporting and National Laboratory Positive Influenza Tests by Week, 2009-10



Columbus & Franklin County Influenza Monitoring Summary – Week 8 (2/21/2010-2/27/2010)

Figure 3: Franklin County Resident ILI Defined ED and Pediatric Urgent Care Visits, 2009-10, Franklin County, OH**

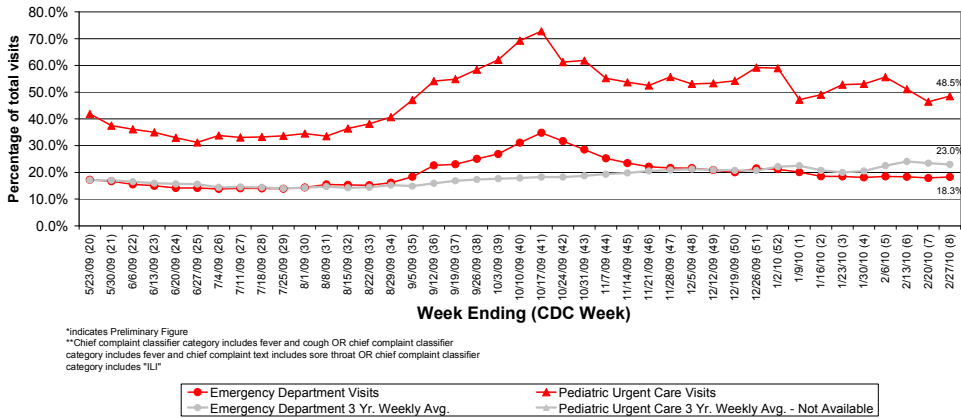


Figure 6: Selected Number of Over-the-Counter Medication Sales and Weekly Baseline Averages and Medians, 2009-10, Franklin County, OH

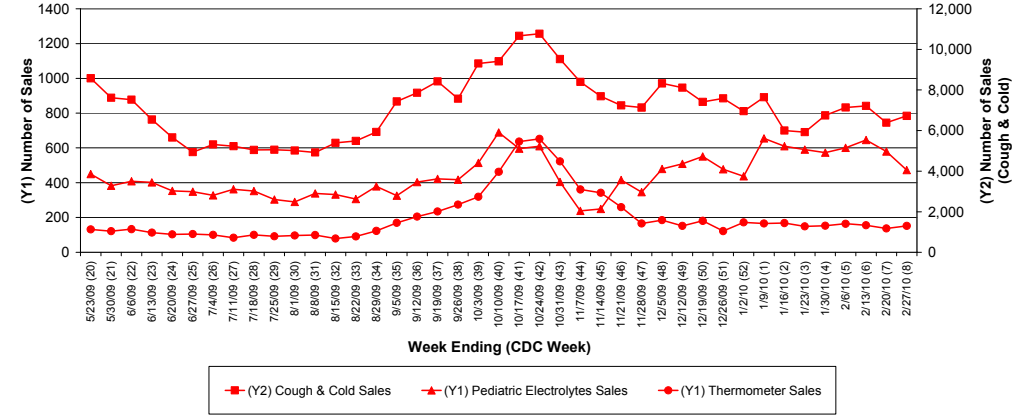


Figure 7: Percentage of Antiviral Prescriptions out of Total Number of Anti-Infective Prescriptions (Selected Pharmacies)



Figure 8: Franklin County Confirmed Influenza Associated Hospitalizations by Hospital Admission Week, Since August, 2009 (As of 12:00 PM, 3/3/2010)

